



Flat 115, The Brew House, 211 Ecclesall Road, Ecclesall, Sheffield, S11 8HG

Saxton Mee

Flat 115, The Brew House, Ecclesall

Guide Price

£210,000

GUIDE PRICE: £210,000 - £220,000

Situated in one of Sheffield's most highly sought-after locations, this beautifully presented and spacious two-bedroom top floor apartment offers the perfect blend of modern living and exceptional convenience. Set directly on Ecclesall Road, you'll find yourself surrounded by a vibrant array of amenities including bars, restaurants, cafés, boutique shops, and excellent transport links, all with effortless access into Sheffield city centre. This apartment has EWS1 certificate.

The area is also renowned for its abundance of green spaces, with the award-winning Botanical Gardens and Endcliffe Park just a short stroll away. A brief drive places you in the breathtaking Peak District National Park, making this an ideal location for those who enjoy both city living and the outdoors. The apartment also provides easy access to the universities and Sheffield's major teaching hospitals.

Internally, the property boasts a large vaulted-ceiling living area, creating a wonderfully bright and open space that flows seamlessly through to the modern kitchen. Two sets of doors open onto the private balcony, perfect for relaxing or entertaining. Both bedrooms are generously sized doubles, with the master bedroom further enhanced by its own en-suite bathroom.

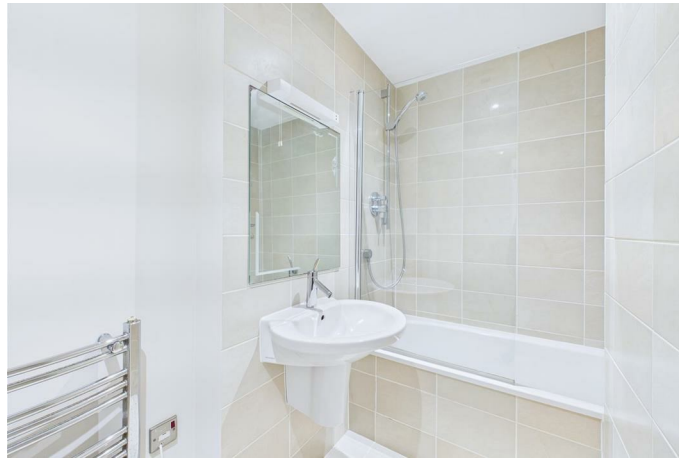
The hallway benefits from a substantial storage cupboard, and the property is fully electric throughout. Additional peace of mind is offered via a secure gated entrance with an allocated parking space.

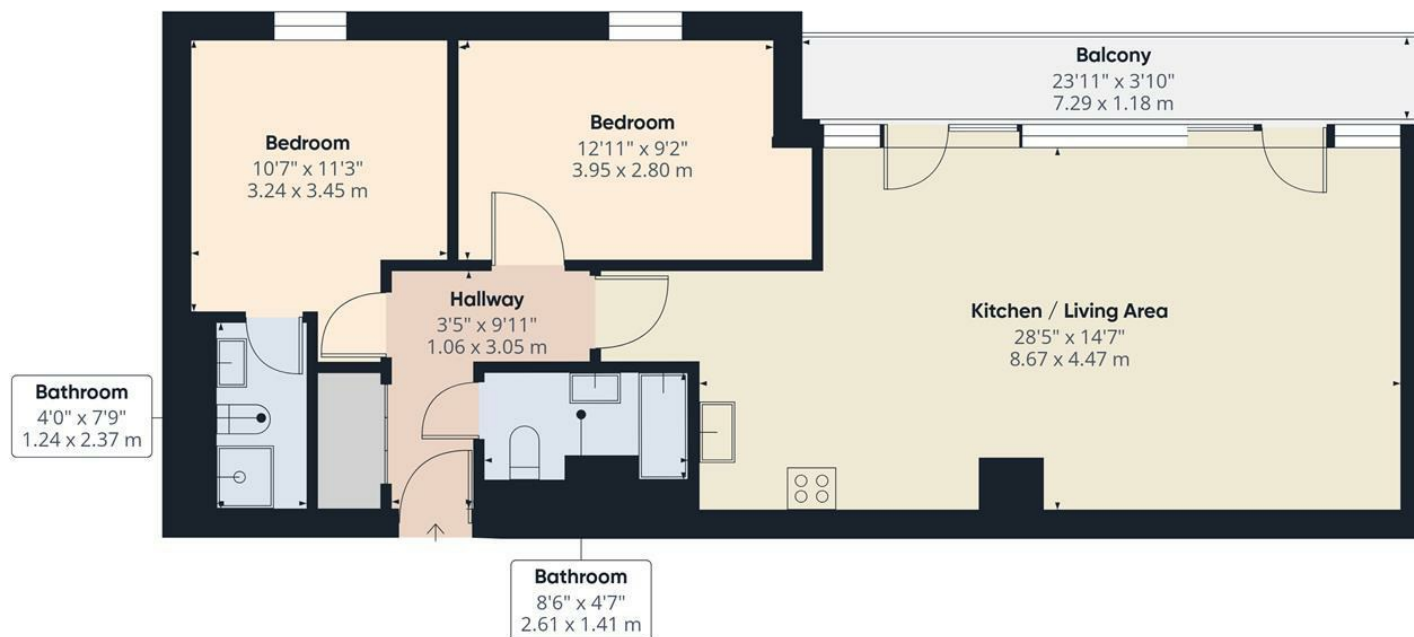
This stunning apartment is ideal for professionals, investors, or anyone seeking stylish, low-maintenance living in a prime location. Early viewing is highly recommended.



- Prime Ecclesall Road location in one of Sheffield's most desirable areas
- Spacious two-bedroom apartment with both bedrooms being generous doubles
- Impressive vaulted-ceiling living area creating a bright and open feel
- Modern kitchen with seamless flow to the living space
- Private balcony accessed via two sets of doors, ideal for relaxing or entertaining
- Master bedroom featuring its own en-suite bathroom
- Secure gated entrance with allocated PARKING SPACE
- Close to Botanical Gardens, Endcliffe Park, universities, hospitals, and excellent transport links
- Leasehold, EPC: TBC
- Viewings Via Banner Cross Branch







Approximate total area⁽¹⁾

806 ft²
74.8 m²

Balconies and terraces

91 ft²
8.5 m²

(1) Excluding balconies and terraces

Calculations reference the RICS IPMS:
3C standard. Measurements are
approximate and not to scale. This
floor plan is intended for illustration
only.

GIRAFFE360

While we endeavour to make our sales particulars fair, accurate and reliable, they are only a general guide to the property and, accordingly, if there is any point, which is of particular importance to you, please contact the relevant office. The Agents have not tested any apparatus, equipment, fittings or services and so cannot verify they are in working order. The buyer is advised to obtain verification. Please note all the measurement details are approximate and should not be relied upon as exact. All plans, floor plans and maps are for guidance purposes only and are not to scale. Under no circumstances should they be relied upon as exact or for use in planning carpets and other such fixtures, fittings or furnishings. YOUR HOME IS AT RISK IF YOU DO NOT KEEP UP REPAYMENTS ON A MORTGAGE OR OTHER LOAN SECURED ON IT. 'A Life Assurance policy may be requested.' 'Written Quotations of credit terms available on request.'

Banner Cross
T: 0114 268 3241
E: bannercross@saxtonmee.co.uk
www.saxtonmee.co.uk

Hathersage
T: 01433 650009
E: hathersage@saxtonmee.co.uk

Bakewell
T: 01629 815307
E: bakewell@saxtonmee.co.uk

Matlock
T: 01629 828250
E: matlock@saxtonmee.co.uk

